

SYDNEY THEATRE CO



Wharf 1 Theatre Technical Specifications

Sydney Theatre Company
The Wharf
Pier 4, 15 Hickson Rd
Walsh Bay NSW 2000

Sydney Theatre Company
PO Box 777
Millers Point NSW 2000

Please direct all enquiries to
Sydney Theatre Company
technical@sydneytheatre.com.au
Phone: +61 2 9250 1941
Fax: +61 2 9251 3687

The information contained in this document is based on current information as of July 2024. While every effort is made to be as specific and as accurate as possible some changes may occur.

Contents

General Information	3
Stage Specifications	5
Staging Accessories	7
Lighting Equipment	8
Sound Equipment	9
Audio Visual Equipment	9
Communications	10
Backstage Facilities	10
Safety	11
Other Information	12

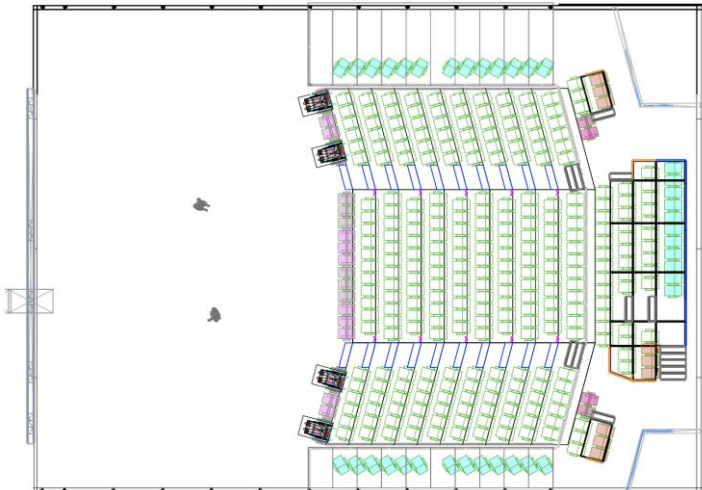
General Information

Wharf 1 Theatre is an adaptable theatre with adjustable truss pod grids, and multiple seating configurations.

Seating Configurations

End On

Capacity: 350

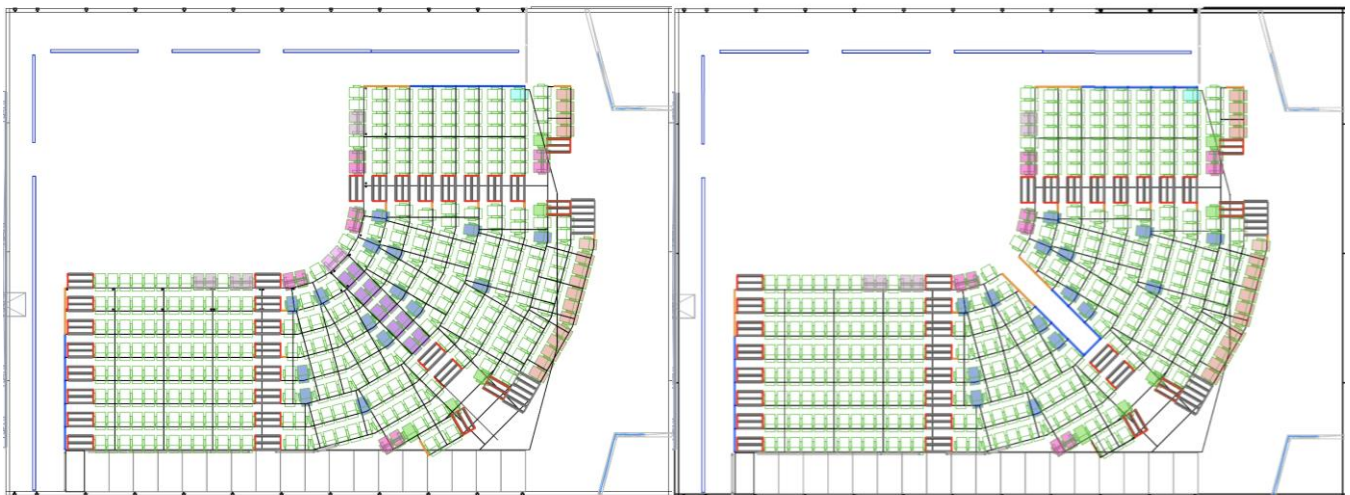


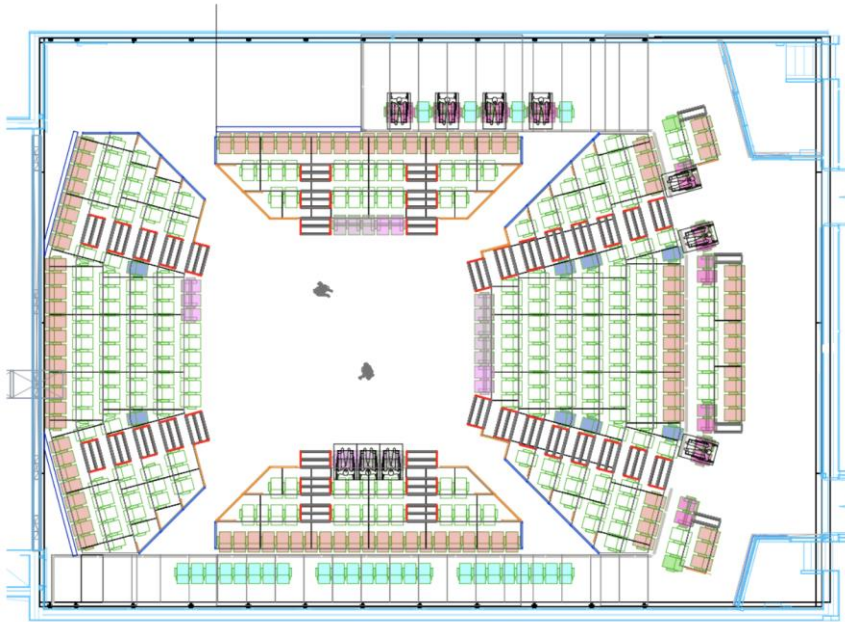
Corner (without vomitory)

Capacity: 362

Corner (with vomitory)

Capacity: 350



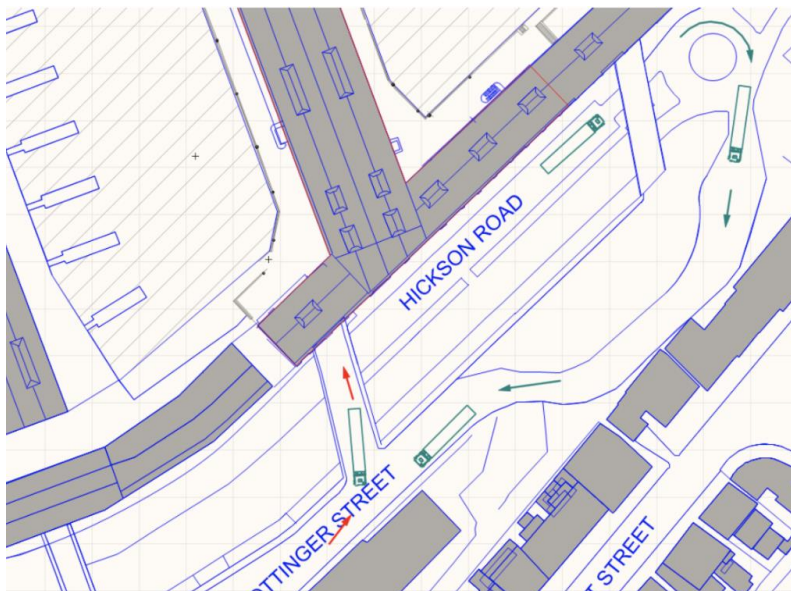


Accessibility

The auditorium and backstage areas are wheelchair accessible.

Load-in Area

The Loading Dock of the Wharf is accessible during approved building operation hours of 700am to 12.00am from Pottinger St. Maximum allowable vehicle is 19m (30T GVM) articulated vehicles that reverses in. If vehicles over 8.8T are required, local residents must be notified. Trucks must be unloaded manually or by forklift as there is no dock height. Trolleys are available to then transfer scenery through the workshop and into the backstage corridor into Wharf 1. A fork lift can be driven from the loading dock through the backstage corridor and to the Wharf 1 door. The doors from the backstage corridor into Wharf 1 stage are 5100mm high by 2240mm wide and the backstage corridor is 5m wide and level to the stage floor. Any large scenic elements must be checked with the Technical Manager or Production Manager before construction to confirm they can fit through these doors.



Storage Space

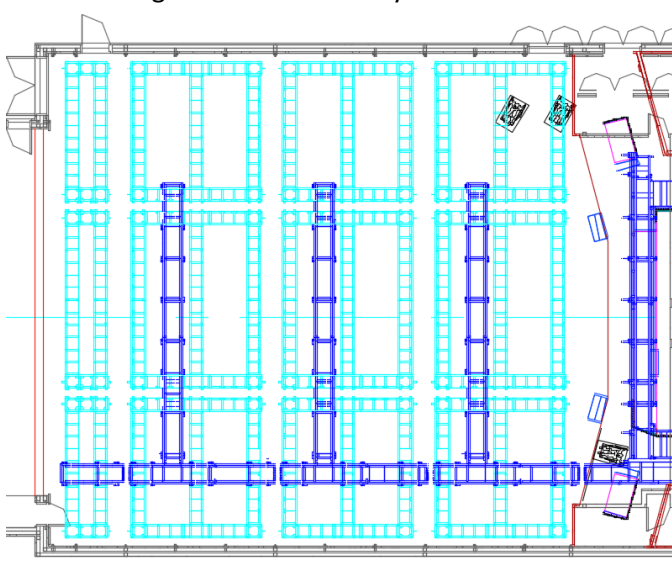
There is limited storage space in the venue. Some space may be negotiated under the seats backstage but access for the cast and crew needs to be maintained at all times. Please be aware that no flammable materials should be stored under the seats at any time. Storage of road cases, etc., if required, can be negotiated in the dock area.

Stage Specifications

A 2400mm clearance from the back edge of the first seat to any built scenery, speakers or lights (including raised show floor) must be maintained to allow audience egress.

Corner seating configuration has a cross over built from flats as part of the venue set up, it also has a centre vomitory option.

Parts of the grid are accessible by catwalks.



Stage Dimensions

Length (North/South):	24800mm
Width (East/West):	19400mm
Setting line to rear wall (end on configuration):	10800mm
Setting line to western wall (corner configuration):	8800mm
Setting line to rear wall (corner configuration):	11900mm

Stage Depth

On Centre line (from Setting Line to back wall in end on configuration)	10800mm
---	---------

Grid Height

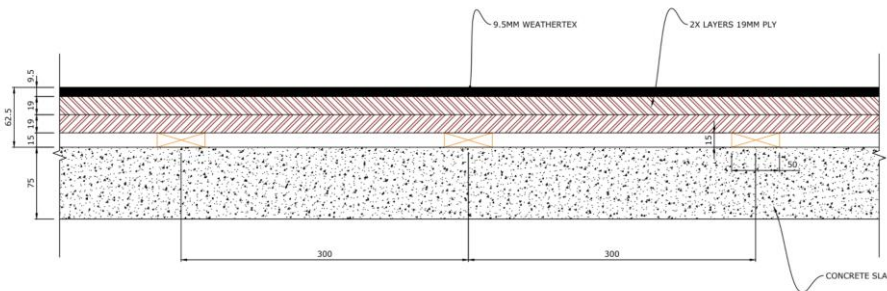
Grid height	6000mm
Maximum scenery height	5600mm

Fire Safety

Immovable set items such as ceiling pieces hung above the stage cannot obstruct the fire sprinklers. Such items should be no wider than 800mm and finished with a surface that is permeable by water.

Stage Floor

The stage surface consists of two layers of 19mm ply on a floating acoustic concrete slab. A 9mm weathertex overlay, painted a satin black, is the standard surface. Scenery can be screwed down into the floor, maximum screw depth of 40mm.



Maximum Loadings

Stage: Live Load Uniformly distributed 750kg/m²
Point load of 450kg/m²

Grid (W1): 200kg point load on truss pod
50kg per metre distributed load on truss
1200kg max rigging load from each truss pod
Maximum of 4000kg live load per bay
Self-weight of truss pods 3430kg per bay
1500kg limit on rigging points

Notes: Maximum of 2 truss pods can be lowered at a time
Maximum of 4 people working in the grid on Height Safety System and maximum of 2 people per bay on the height safety system
People cannot ride trusses while they are being moved
Truss pods cannot be moved in performance with audience
Vertical Unistrut 500 kg concentrated load per vertical, 50kg per metre distributed load
Horizontal Unistrut 50 kg per metre distributed load

Staging Accessories

Masking

There is no standard masking installation in the Wharf 1 Theatre. Please check availability of the masking with the Technical Manager or the Head Mechanist, as it is not venue specific stock.

Rostra

STC owns approx. 120 x 2m x 1m steel framed rostra, which can be set at variable heights. Leg heights must be specified prior to bump in and associated charges will be passed onto the production.

Height Access

STC owns a Haulotte Star 10 and Genie GR20 for height access during bump-ins. Maximum working height is 10m. STC also has a stock of various ladders available for use.

Grid is accessible via dimmer room on Level 3. Fall arrest training is required to work in the grid. There is no access to the grid if not trained. Staff must be harnessed and tethered at all times when working in the grid.

Other

Various forms of tracking are available upon request. Please check with the Head Mechanist or the Technical Manager for availability, lengths, etc.

Lighting Equipment

Below is a list of lighting equipment allocated to the Wharf 1 Theatre. Please note that the venue does not come with a standard lighting rig.

Control

ETC GIO@5 Console with ION backup
Lighting designer's monitor

Fixture	Qty	Wattage	Notes
ETC Source 4 body	100	750 W	
ETC Source 4 LED Series 2 Lustre+	30	171 W	
Source 4 14 Degree Enhanced Definition	10		
Source 4 19 Degree Enhanced Definition	40		
Source 4 26 Degree Enhanced Definition	80		
Source 4 36 Degree Enhanced Definition	80		
Source 4 50 Degree Enhanced Definition	40		
ColourSource Cyc	15		
Robert Juliat 310 1.2K Fresnel	40	1.2 kW	
Robert Juliat 310 2K Fresnel	10	2 kW	

Accessories

Robert Juliat 310 1.2K Fresnel Barndoor	40		
Robert Juliat 310 2K Fresnel Barndoor	10		
Source 4 Iris	10		
Source 4 Gobo Holder	20		
Source 4 Gobo Holder (Glass)	20		

Dimmers

ETC Sensor ETR10AFR	464	Dim/Switch
ETC Sensor ETR25AFR	10	Dim/Switch

Patching

The dimmer room is located on level 3 on the North side of the theatre above the control room.

Ethernet and DMX patching is available throughout grid and back stage area. Additional patch port nodes are available from floating stock.

Various lengths and configurations or Socapex available.

Floating Equipment

The lighting department has some extra fixtures and equipment available for use at an extra charge. For a current list of this equipment please contact the Head of Lighting. Use and availability of this equipment is at the discretion of the Head of Lighting.

Sound Equipment

Below is a list of sound equipment allocated to the Wharf 1 Theatre. This system is an immersive Meyer loudspeaker system with full object control through Meyers integrated spacemap go interface.

Playback

	Qty	Notes
Digico SD11I Mixing Console	1	Software Version V1742 + Waves
Mac Mini 2.7Ghz Dual-Core with Qlab Pro Bundle	2	Qlab v5
Waves MGB Digigrd Madi Audio interface	2	
Waves impact server	1	Used for extra outputs from DM1000
Various waves Plugins	1	C6, Q10, H-Verb & Dan Dougan

Speakers & Processing

Meyer Ultra-X40 self powered on Flying Yoke	5	Main Left & Right
Meyer Ultra-X40 self powered on U-Bracket	2	Main Centres
Meyer 900-LFC on Flying Grid	2	Flown Low Frequency
Meyer UP-4Slim on U-Bracket	6	Font Fill
Meyer Ultra-X40 on U-Bracket	3	Delay Line
Meyer Ultra-X20	12	Surround
Meyer UPM-1P on Flying Yoke	12	Font & Rear Overheads
Meyer Galaxy 816 DSP	3	With Spacemap Go processing

Tie Lines & Distribution

Venue wide Male & Female XLR distribution	#
Venue wide SDI distribution	#
Venue wide Cat-6 Ethernet distribution	#

Power

Dedicated sound power throughout venue	
Powerware 9390 40kVA 3-Phase UPS	1
Eaton Premium power filter	1

Floating Equipment

The sound department has some other equipment available for use at an extra charge. For a current list of this equipment please contact the sound supervisor. Use and availability of this equipment is at the discretion of the Sound & Video Manager.

Audio Visual Equipment

The Wharf 1 Theatre does not have any permanent audiovisual infrastructure or allocation of equipment. The sound and video department have some audiovisual equipment available for use at an extra charge. For a current list of this equipment please contact the sound & video manager. Use and availability of this equipment is at their discretion.

Communications

Talkback System

	Qty	Notes
Clear-Com, 2 ch. Partyline Base Station (MS-702)	1	
Clear-Com Wired Belt pack, Single channel (RS-601)	10	
Clear-Com Freespeak II Base Station (FSII-BASE)	1	We have 8x antennae distributed throughout the building with increased density in the theatres for solid coverage.
Clear-Com Freespeak II Wireless Belt pack (BP19X4)	10	Includes 2x batteries per beltpack

Cue Light System

Leon 8 channel Master Station (QLM8 Mk3)	1
Leon Standard Outstation (QLS-B Mk3)	8

Stage Relay

Stage audio relay and FOH Stage HD Camera feed and low light are available to the dressing rooms and control room. Additional audio or camera feeds can be installed as required. Please discuss and make these arrangements with the Sound & Video Supervisor.

Backstage Facilities

Wharf 1 has 5 Dressing Rooms with space for up to fourteen performers. There are separate toilet and shower facilities. Separate laundry facilities including 2 x Washers, 1 x dryer and 1 x drying cabinet. There is a separate wig room. A private Green Room with a fridge and microwave is available.

Safety

The Sydney Theatre Company is committed to ensuring the health and safety of all staff, contractors, visiting staff and patrons. The Sydney Theatre Company undertakes to comply with all Work, Health and Safety legislation and regulations. This legislation will be viewed as the minimum standard. A Risk Assessment must be carried out on each production.

All design aspects need to be created in a way that is appropriate to the level of activity undertaken and does not pose a risk to the health and safety of its users (including working at heights, manual handling and noise levels). This applies to all aspects of design for STC productions including, sets, props, costumes, lighting and sound covering the production period, rehearsals, bump-in and season.

All scenery must be designed and built in accordance with the licensing and building code requirements that pertain to the venue. Set items must be of a suitable size and weight appropriate to the amount of handling and size of transportation facilities available. Set pieces on which performers are to perform and which exceeds two metres in height must comply with the building code of Australia.

All specified set materials should be treated with fire retardant or able to be effectively treated with approved fire retardant coatings. Where this is not possible, e.g. certain synthetic material, the use of such material may be possible subject to an effective risk management plan. In certain cases, this plan may require approval by the Building Services Manager in consultation with the relevant licensing authorities. Please raise any such issues as early as possible.

Emergency exits, egress routes and signage must be maintained. These zones are usually indicated in the venue plans but the Technical Manager or Production Manager can provide you with more information before you begin your design.

To assist us in ensuring a safe working environment for all staff, contractors, visitors and patrons, the Sydney Theatre Company requires that all electrical equipment brought on to site must have been electrically checked and possess a clearly displayed current test and tag label (as specified in Australian/New Zealand Standard 3760). Any equipment not in current test period, clearly tagged or deemed unsafe will be removed from service immediately.

Sound exposure limits for unprotected ears to audio effects and music onstage and in the auditorium are subject to a risk assessment (85db or above). Limits are subject to review after consultation by employees or audience members and may require expert counsel in relation to audiometric testing and advice.

Sydney Theatre Company staff must be present during all work done in its venues and workshops to ensure the safety of all. All staff, whether visitors or contractors, must be inducted and sign the relevant Safe Work Procedure document before using any plant or equipment on the Sydney Theatre Company premises.

Please do not hesitate to contact the relevant Department Head or Manager for more information.

Other Information

STC staff work under the Sydney Theatre Company Theatrical Employees Enterprise Agreement. Any schedules should be formulated with this agreement in mind, i.e. breaks, penalties, etc. Please do not hesitate to contact the relevant Department Manager for more information.

Wharf 1 has addressable Carbon Monoxide (CO) detectors, which can be isolated for hot works subject to approval. There is a mimic panel for the fire alarm system on the public walkway adjacent to administration.

Wharf 1 has an Induction Loop installed for hearing impaired patrons. Headsets are available from FOH staff.

Various tables are available for props. Please check for availability.

There is limited parking available to show staff. Parking must be negotiated with the House Services either directly or via the Stage Manager. Alternatively there is metered parking on Hickson Rd. Also Circular Quay train station is 15 minutes walk and there are taxis available on Hickson Rd.

Cafes and restaurants are all available within a short walk of the Wharf. The Bar at the End of the Wharf is also available for lunch and dinner.

Standard building opening hours are 7.30am to 12.00am Monday to Friday and 10.30am to 12.00am Saturday. Access outside these hours must be negotiated and will incur overtime penalties.