

SYDNEY THEATRE COMPANY



2026 SEASON

Sydney Theatre Company acknowledges the Gadigal of the Eora nation who are the traditional custodians of the land and waters on which the Company gathers. We pay our respects to Elders past and present, and we extend that respect to all Aboriginal and Torres Strait Islander people with whom we work and with whom we share stories.

A WELCOME FROM MITCHELL BUTEL



Welcome to the 2026 Season at Sydney Theatre Company and the first season I have curated as Artistic Director and Co-CEO. It has been a great privilege, honour and delight to build (with the incredible support of the Company's Board, Foundation, Executive Director and Co-CEO, Anne Dunn and a brilliant group of Company staff colleagues and partners) a season that I hope will feed, entertain, challenge, soothe, awaken, dazzle and dare you in more ways than you'd expect!

And it's been a similar delight to have built it with the input of so many great artists who have brought their dreams to us and which will now spring to life on stage in 2026.

What our artists imagine is only made real when it is shared with and received by you – our audience. I'm so glad you've opened these pages to begin that journey with us and so thankful to those who have travelled here before and are coming back for more!

Like the wonderful Sydney Theatre Company Artistic Directors who have preceded me, I want to share with you a diversity of works and genres and voices. In this season, you'll find three exciting world premiere Australian works, other recent Australian gems, the best of contemporary international theatrical writing and beloved and classic tales told anew. And some really good tunes. All created by a cavalcade of acting, directing and designing talents. Some at the beginning of their careers, some returning to the Company after soaring to thrilling professional heights.

At the heart of all the shows in our season is a desire to hold space for difference. It is something that I think theatre does better than any other cultural medium.

Theatre is often created when we collectively witness two opposing views come into close contact. Sometimes they collide. And drama is born. But sometimes, thesis and antithesis become synthesised and we're offered a new way of seeing things. Or we see deeper into what troubles our heroes and by extension, us.

There is a work by American conceptual/visual artist Barbara Kruger that is made up of three words "BELIEF+DOUBT=SANITY". I like that notion a lot.

In many of the shows we have in store for you this year, you'll witness many beliefs and values challenged and doubted, sometimes dramatically, sometimes comically, even musically. Either way, I'm hopeful that you'll leave the theatre reader to realise that holding a different view to your neighbour is not only not as frightening as you think but could be what ultimately makes the world spin forward. That what is "normal" for one may not be for another. And that appreciating that, investigating it, even celebrating it, is something pretty special and something very human. And something that helps us more fully understand and value the planet we find ourselves on and the time we find ourselves in.

We think all the shows we have planned in 2026 are pretty special. We hope you do too. I'm so looking forward to the journey we're all about to go on together.

Mitchell Butel

Artistic Director & Co-CEO

THE SEASON

2026

Get ready to meet Australia's greatest theatre-makers live and up close at Sydney Theatre Company



PURPOSE
2 Feb ~ 22 Mar

p4 | Wharf 1 Theatre



THE NORMAL HEART
9 Feb ~ 21 Mar

p6 | Drama Theatre, Sydney Opera House



MY BRILLIANT CAREER
21 Mar ~ 26 Apr

p8 | Roslyn Packer Theatre



THE RIVER
30 Mar ~ 9 May

p10 | Drama Theatre, Sydney Opera House



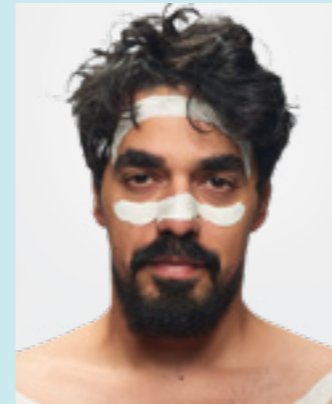
AN ILIAD
13 Apr ~ 30 May

p12 | Wharf 1 Theatre



DOUBT: A PARABLE
30 Jun ~ 2 Aug

p14 | Roslyn Packer Theatre



BENNELONG IN LONDON
18 Jul ~ 16 Aug

p16 | Wharf 1 Theatre



HOUSEWORK
5 Sep ~ 17 Oct

p18 | Drama Theatre, Sydney Opera House



GIRLS & BOYS
17 Sep ~ 1 Nov

p20 | Wharf 1 Theatre



THE UNFRIEND
29 Sep ~ 31 Oct

p22 | Roslyn Packer Theatre



STRONG IS THE NEW PRETTY
22 Oct ~ 5 Dec

p24 | Drama Theatre, Sydney Opera House



THE GOSPEL ACCORDING TO PAUL THE SECOND COMING
6 Nov ~ 20 Dec

p26 | Wharf 1 Theatre



WHISPERING JACK: THE JOHN FARNHAM MUSICAL
15 Nov ~ 20 Dec

p28 | Roslyn Packer Theatre

Lock in a year of exciting theatre with a Season Ticket at [sydneytheatre.com.au/2026](https://www.sydneytheatre.com.au/2026)

2 Feb ~ 22 Mar

PURPOSE

By **Branden Jacobs-Jenkins**

Directed by **Zindzi Okenyo**

AUSTRALIAN PREMIERE

Designer

Jeremy Allen

Lighting Designer

Kelsey Lee

With

Deni Gordon

Markus Hamilton

Tinashe Mangwana

Sisi Stringer

“Brilliant and funny and serious and complex and powerful”

Oprah Winfrey

In an exciting coup, the most awarded new American play of 2025 is heading this way. Fresh from winning the 2025 Tony Award for Best Play, the 2025 Pulitzer Prize for Drama and the 2025 New York Drama Critics’ Circle Award, *Purpose* comes directly from Broadway to Sydney Theatre Company in the first new production to be staged since its premiere.

An influential African American family stands firmly on the highest pedestal of American politics; producing congressmen, celebrity pastors and civil rights leaders. But when their estranged, youngest son, Nazareth, returns home with an uninvited house guest, decades of secrets and unresolved tensions threaten to topple their empire.

Channeling great American playwrights from Arthur Miller to Tracy Letts (*August: Osage County*), Branden Jacobs-Jenkins’ (*Appropriate*) masterstroke is “a sparring match, crackling with sharp punchlines, pulling us into an all-out brawl” (*New York Magazine*).

Directed by Zindzi Okenyo (*Sweat*) and featuring actors Deni Gordon, Markus Hamilton, Tinashe Mangwana and Sisi Stringer, *Purpose* is a “merciless dissection of hypocrisy – you may have trouble catching your breath from laughing so hard” (*The New York Times*).



Sisi Stringer, Tinashe Mangwana, Markus Hamilton, Deni Gordon

Venue

Wharf 1 Theatre

Approx. duration

2 hrs 50 mins, including interval

Content

Strong language, mature themes including mental illness, gunshot

Spotlight Events

Night with the Artists

~ Mon 16 Feb, post-show

Access Performances

Audio Described

~ Sat 7 Mar 1.30pm

Auslan Interpreted

~ Sun 15 Mar 2pm

Production Patrons

Rosie Williams & John Grill AO

9 Feb ~ 21 Mar

THE NORMAL HEART

By **Larry Kramer**

Directed by **Dean Bryant**

Designer
Jeremy Allen
Lighting Designer
Nigel Levings
Composer
Hilary Kleinig
Sound Designer
Andrew Howard

With
Mitchell Butel
Tim Draxl
Michael Griffiths
Emma Jones
Evan Lever
Keinyan Lonsdale
Mark Saturno

“Inspiring, moving, provocative and extraordinary”

Australian Stage

In 1989, *The Normal Heart* made its Australian premiere at Sydney Theatre Company to roaring standing ovations, in a production that spoke to the terrifying reality of the AIDS crisis.

Almost 40 years later, Larry Kramer’s groundbreaking, semi-autobiographical drama returns to Sydney Theatre Company: a monumental tribute to those we lost, a poignant reminder for those who lived through the epidemic and a revelatory insight into the beginning of a world-changing movement.

Artistic Director and four-time Helpmann Award-winner Mitchell Butel delivers a “poetically heartbreaking” (*Limelight*) performance as Ned Weeks, a New York writer determined to uncover the truth about the mystery illness decimating his community and the lack of government action in response. Butel is joined by an astonishing ensemble cast – including Tim Draxl (*A Place to Call Home*), Keinyan Lonsdale (*Love, Simon, Dance Academy*) and Emma Jones making her Sydney Theatre Company debut with “stoic kindness and unerring intelligence” (*InDaily SA*) – as members of a community whose passion, humour and love for each other unites them in their fight for survival.

Directed by Dean Bryant (*Dear Evan Hansen*), this production comes from State Theatre Company South Australia where it was praised as “a complete triumph” (*Stage Whispers*) and “the stuff of modern theatrical legend” (*The Advertiser*).



Venue
Drama Theatre, Sydney Opera House
Approx. duration
2 hrs 30 mins, including interval
Content
Strong language, mature themes including homophobia and death, sexual references, herbal cigarettes, smoke and haze effects

Spotlight Events
Night with the Artists
~ Mon 23 Feb, post-show
Access Performances
Audio Described
~ Sat 21 Mar 1.30pm
Captioned
~ Tue 10 Mar 6.30pm
~ Sat 14 Mar 1.30pm

Original Production by
STATE THEATRE
COMPANY SOUTH AUSTRALIA

In Association with
 **WAGMAN PRODUCTIONS**
— SARAH ROHRSHHEIM

Community Partner


Mitchell Butel, Tim Draxl, Keinyan Lonsdale

21 Mar ~ 26 Apr

MY BRILLIANT CAREER

A new musical based on the novel by **Miles Franklin**
Book by **Sheridan Harbridge** and **Dean Bryant**
Music by **Mathew Frank** and lyrics by **Dean Bryant**
Directed by **Anne-Louise Sarks**

“The holy grail of Australian musical theatre”

The Age

Miles Franklin’s classic novel as you’ve never seen it before, with a live soundtrack that’s equal parts contemporary pop, folksy bush band and barnstorming pub rock.

Beloved by audiences and showered with five-star reviews, *My Brilliant Career* was Melbourne’s most in-demand ticket in 2024. “Brimming with abundant heart and soul” (*Time Out*), this uniquely Australian story has captivated a new generation and will have its Sydney premiere in 2026.

The “outrageously talented” (*Australian Stage*) Kala Gare plays Sybylla Melvyn, a fiercely intelligent and individual young woman in 1890s Australia who rallies against the idea that her ambition should start and end at finding a wealthy husband. Forced to choose between romance and her career, a family and a future that she defines, she decides she’s having it all.

With a joyfully fresh adaptation by Sheridan Harbridge, Dean Bryant and Mathew Frank, expert direction by Melbourne Theatre Company Artistic Director Anne-Louise Sarks, and stunning set and costume design by Olivier and Tony Award-winner Marg Horwell (*The Picture of Dorian Gray*), *My Brilliant Career* transforms an iconic literary figure into an effervescent rockstar heroine for the modern age.

Venue

Roslyn Packer Theatre

Approx. duration

2 hrs 30 mins, including interval

Content

Mature themes, sexual references, theatrical haze

Spotlight Events

Night with the Artists

~ Mon 6 Apr, post-show

Access Performances

Audio Described

~ Tue 21 Apr 6.30pm

Auslan Interpreted

~ Thu 23 Apr 7.30pm

Captioned

~ Sat 18 Apr 1.30pm

~ Tue 21 Apr 6.30pm

Schools Day

~ Wed 29 Apr 11.30am

**MELBOURNE
THEATRE
COMPANY**

My Brilliant Career was developed by Monash University, Melbourne, as part of the Jeanne Pratt Artist in Residency program, City of Stonnington and Melbourne Theatre Company’s NEXT STAGE Writers’ Program.

Musical Director

Victoria Falconer

Choreographer

Amy Campbell

Set & Costume Designer

Marg Horwell

Lighting Designer

Matt Scott

Orchestrator / Vocal Arranger

James Simpson

Sound Designer

Joy Weng

With

Cameron Bajraktarevic-Hayward

Victoria Falconer

Kala Gare

Raj Labade

Ana Mitsikas

Christina O’Neill

Jarrad Payne



Kala Gare

30 Mar ~ 9 May

THE RIVER

By **Jez Butterworth**
Directed by **Margaret Thanos**

Designer
Anna Tregloan
Composer & Sound Designer
Sam Cheng

With
Miranda Otto

Still waters run deep

Beloved global star Miranda Otto (*The Lord of the Rings*, *Ladies in Black*, *A Doll's House*) returns to the Sydney Theatre Company stage in this thrilling play by one of the world's greatest living playwrights.

On a moonless night, a lovesick fisherman entertains a woman at his family's remote cabin on the cliffs. The energy between them crackles like the flames in the fireplace. It should be a weekend full of romance and trout fishing, but all is not as it seems.

From Jez Butterworth, Olivier and Tony Award-winning playwright (*Jerusalem*, *Mojo*) and screenwriter (*Ford v Ferrari*, *Spectre*), this lyrical and sublime drama "unfolds like a tantalising cross between a piece of deeply felt poetry and a sleight-of-hand puzzle" (*The Independent*).

"Relentlessly inspired" (*The Sydney Morning Herald*) rising star director Margaret Thanos offers a sleek and surprising interrogation of the mysteries of intimacy, love and connection.

The River is an atmospheric and intimate chamber drama, "alluring and unsettling in turn" (*The Arts Desk*) that will electrify audiences and leave them haunted for days.

Venue

Drama Theatre, Sydney Opera House

Approx. duration

80 mins, no interval

Content

Strong language, mature themes, sexual references

Spotlight Events

Lunch with the Artists

~ Mon 2 Mar, 12.15-2.30pm

The Wharf Restaurant and Bar

Night with the Artists

~ Mon 13 Apr, post-show

Access Performances

Auslan Interpreted

~ Thu 7 May 7.30pm

Captioned

~ Tue 5 May 6.30pm

~ Sat 9 May 1.30pm



Miranda Otto

13 Apr ~ 30 May

AN ILIAD

By **Lisa Peterson** and **Denis O'Hare**
Adapted from **Homer's Iliad**
Translated by **Robert Fagles**
Directed by **Damien Ryan**

Associate Director
Ian Michael

With
David Wenham

“Every time I sing this song, I hope it’s the last time.”

A wry, witty and world-weary poet introduces himself as a storyteller, bound to recount the myth of the Trojan War until humanity can overcome its rage for violence and destruction.

Award-winning international star David Wenham returns to Sydney Theatre Company as the Poet: a man who has spent millennia walking through battlefields, trenches and cities torn to the ground, spreading his story to every corner of the world. Finally, he attempts to quit telling this tale.

Lisa Peterson and Denis O'Hare's acclaimed and dynamic adaptation transforms Homer's Ancient Greek saga of heroes, gods and battles into an urgent and personal exploration of difference, disagreement and the devastation of war.

Led by one of Australia's most innovative directors, Damien Ryan (Sport for Jove), and accompanied on stage by a live musician, this is Sydney's opportunity to see Wenham up close in the intimacy of Wharf 1 Theatre as he delivers a “shocking, glorious, primal and deeply satisfying” (*Time Out New York*) appeal for hope and empathy.

Venue

Wharf 1 Theatre

Approx. duration

100 mins, no interval

Content

Strong language, mature themes including violence, war and death, alcohol use

Spotlight Events

Night with the Artists

~ Mon 27 Apr, post-show

Access Performances

Captioned

~ Tue 26 May 6.30pm

~ Sat 30 May 1.30pm

Production Patron

Gretel Packer AM



David Wenham

30 Jun ~ 2 Aug

DOUBT

A PARABLE

By **John Patrick Shanley**
Directed by **Marion Potts**

With
Pamela Rabe
Sam Worthington

“Passionate, exquisite, important and engrossing”

Newsday

Stage and screen icons Sam Worthington (*Avatar*) and Pamela Rabe (*Wentworth*) go head-to-head in one of the most iconic and electrifying plays of the twenty-first century.

The Bronx, NY, 1964. Sister Aloysius (Rabe), the iron-fisted headmistress of St. Nicholas Church School suspects a progressive priest of inappropriate behaviour with the school's sole Black student, Donald Muller. The charismatic Father Flynn (Worthington) denies the allegations entirely.

In a brand-new production of John Patrick Shanley's titanic drama, powerhouse Australian director Marion Potts makes a grand return to Sydney Theatre Company, joining forces with a quartet of the nation's finest actors to wrestle with the gaps between belief and truth.

Twenty years on from winning the Pulitzer Prize and Tony Award for Best Play, *Doubt* has “never been more urgent” (*Variety*) than it is today.

Venue

Roslyn Packer Theatre

Approx. duration

90 mins, no interval

Content

Mature themes including child sexual abuse

Spotlight Events

Lunch with the Artists

~ Mon 1 Jun, 12.15–2.30pm

The Wharf Restaurant and Bar

Night with the Artists

~ Mon 13 Jul, post-show

Access Performances

Audio Described

~ Sat 25 Jul 1.30pm

Auslan Interpreted

~ Sun 26 Jul 2pm

Captioned

~ Tue 28 Jul 6.30pm

~ Sat 1 Aug 1.30pm



Pamela Rabe, Sam Worthington

18 Jul ~ 16 Aug

BENNELONG IN LONDON

By **Jane Harrison**

Directed by **Ian Michael**

WORLD PREMIERE

Designer

Emma White

Lighting Designer

Trent Sidgeest

Composer & Sound Designer

James Brown

Cultural Advisor

Matthew Doyle

Dramaturg

Jules Orcullo

With

Googoorewon Knox

Guy Simon

“History is a tricky thing. We usually only get one side of the story.”

A tenacious young actor (Guy Simon – *The Tempest, The Visitors*) is preparing for the role of a lifetime in his tiny apartment. Well, at the moment, it’s just an audition, but he’s hopeful! As he readies himself to become one of Australian history’s most iconic figures, his imagination conjures to life Bennelong himself (Googoorewon Knox – *Hamilton, Big Name, No Blankets*): a man forced to navigate his way through two cultures colliding at breakneck speed.

Both travel back to 1788 where Bennelong, now a young Wangal man, is abducted by Governor Phillip. Bennelong becomes his go-between with the Eora people and later, the first Aboriginal man to visit Europe and return. And the eventual husband of a woman called Barangaroo.

Jane Harrison, the singular voice behind the award-winning *The Visitors* and *Stolen* reunites with “the most exciting new director of this generation” (*Limelight*), Ian Michael, to depict this time-bending conversation and burgeoning friendship between two First Nations men seeking to understand each other, themselves and the art of auditioning along the way.

Venue

Wharf 1 Theatre

Approx. duration

90 mins, no interval

Content

Infrequent strong language, infrequent racist language, mature themes including racism, colonisation and violence

Spotlight Events

Night with the Artists

~ Tue 4 Aug, post-show

Access Performances

Audio Described

~ Sat 15 Aug 1.30pm

Auslan Interpreted

~ Thu 13 Aug 7.30pm

Schools Day

~ Wed 12 Aug 11.30am



Googoorewon Knox, Guy Simon

5 Sep ~ 17 Oct

HOUSEWORK

By **Emily Steel**

Directed by **Shannon Rush**

Designer

Ailsa Paterson

Lighting Designer

Nigel Levings

Composer & Sound Designer

Andrew Howard

With

Franca Lafosse

Indira Naidoo

Emily Taheny

Susie Youssef

A whip-smart and gaspingly funny sprint through the corridors of power

Sex scandals, culture wars, motherhood and Machiavellian manipulation – it’s all in a day’s work inside the House.

Playwright Emily Steel and director Shannon Rush pull back the curtain on the real Parliament House in this bold, black comedy hailed an “undeniably Australian and gloriously uncompromising” (*The Conversation*) future classic.

Brought to brilliant life by some of Australia’s most beloved comic actors, *Housework* follows a group of political dynamos through the backstabbing and backroom deals of a high-stakes sitting week in Canberra, whilst balancing family crises just as frantic.

With Susie Youssef (*Deadloch*, *The Project*) as first-time MP Ruth Mandour, Emily Taheny (*Mad as Hell*) as her overworked Chief of Staff and iconic media polymath Indira Naidoo as... well, you’ll see, this is Aussie political satire at its very best.



Venue

Drama Theatre, Sydney Opera House

Approx. duration

2 hrs 10 mins, including interval

Content

Strong language, mature themes, sexual references, herbal cigarettes

Spotlight Events

Night with the Artists

~ Mon 21 Sep, post-show

Access Performances

Audio Described

~ Tue 13 Oct 6.30pm

Captioned

~ Tue 6 Oct 6.30pm

~ Sat 10 Oct 1.30pm

Schools Day

~ Wed 16 Sep 11.30am



Housework was originally commissioned and produced by State Theatre Company South Australia and supported by a residency at Assemblage Centre for Creative Arts at Flinders University.

Susie Youssef, Emily Taheny, Indira Naidoo

17 Sep ~ 1 Nov

GIRLS & BOYS

By **Dennis Kelly**
Directed by **Mitchell Butel**

Designer
Ailsa Paterson
Lighting Designer
Nigel Levings
Composer
Alan John
Sound Designer
Andrew Howard

With
Justine Clarke

“Be prepared to be rocked to the core”

New York Daily News

“The triumph” (*The Sydney Morning Herald*) of the 2023 Sydney Festival and 2022 Adelaide Festival returns to the Sydney stage.

She meets him in an airport queue and sparks fly. Their passionate love affair takes them to marriage, mortgage and children – an ordinary family life. Her natural working-class wit works to her advantage and unexpectedly, she starts rising above her allotted rung on the British social ladder. But as the power dynamic between them shifts, imperceptible cracks become yawning gulfs. When the home they built begins to fall, nothing prepares her for what happens next.

A ticking time bomb, *Girls & Boys* is an engrossing, one-woman play from Dennis Kelly (*Osama the Hero*, *Matilda: The Musical*) that shifts gears from romantic comedy to shock in a matter of seconds. The incredible Justine Clarke, whose versatility has shone on stage (*Julia*) and on screen (*Love My Way*, *Tangle*, *Look Both Ways*), delivers this edge-of-your-seat monologue that will leave you breathless.

“*Girls & Boys* is a clever play intelligently built on quiet passion and no hiding places. Justine Clarke... is brilliant.” (*Stage Noise*)

Venue

Wharf 1 Theatre

Approx. duration

1 hr 50 mins, no interval

Content

Strong language, mature themes including family violence, descriptions of graphic violence

Spotlight Events

Night with the Artists

~ Mon 28 Sep, post-show

Access Performances

Auslan Interpreted

~ Thu 29 Oct 7.30pm

Original Production by



Justine Clarke

29 Sep ~ 31 Oct

THE UNFRIEND

By **Steven Moffat**
Directed by **Simon Phillips**
AUSTRALIAN PREMIERE

Associate Director
Kenneth Moraleda
Designer
Isabel Hudson

With
Helen Thomson

“A killer comedy to die for”

WhatsOnStage

Comedic genius Helen Thomson (*Colin from Accounts, The Importance of Being Earnest*) is back on board at Sydney Theatre Company to challenge everything you thought you knew about good manners.

Directed by the legendary Simon Phillips (*Rosencrantz and Guildenstern Are Dead, Priscilla: Queen of the Desert*), *The Unfriend* is the stage debut of Steven Moffat, the writer behind mega hits *Doctor Who*, *Sherlock* and *Douglas is Cancelled*.

On a cruise ship, Peter and Debbie befriend Elsa, a sassy and less than sensitive American widow who demands they stay in touch. When Elsa invites herself to stay a few months later, they look her up online and learn that she’s been putting more than mushrooms into the odd casserole, with poisonous results. Now, the couple must race to protect their family whilst avoiding the greatest faux pas of all: being, well, a bit impolite? Because guess who’s coming to... murder!

This deliciously dark comedy takes a hilarious bite out of middle-class England’s obsession with being “nice”, no matter the cost. Don your napkin for “an uproarious comedy of English embarrassment... a relentlessly snowballing orgy of discomfiture... a delight” (*London Evening Standard*).

Venue

Roslyn Packer Theatre

Approx. duration

2 hrs, including interval

Content

Strong language

Spotlight Events

Lunch with the Artists

~ Mon 31 Aug, 12.15–2.30pm

The Wharf Restaurant and Bar

Night with the Artists

~ Tue 13 Oct, post-show

Access Performances

Audio Described

~ Sat 31 Oct 1.30pm

Auslan Interpreted

~ Sun 25 Oct 2pm

Captioned

~ Tue 20 Oct 6.30pm

~ Sat 24 Oct 1.30pm



Helen Thomson

22 Oct ~ 5 Dec

STRONG IS THE NEW PRETTY

By **Suzie Miller**
Directed by **Lee Lewis**
WORLD PREMIERE

Lighting Designer
Paul Jackson

With
Lucy Bell
Sheridan Harbridge
Amy Ingram

“Kick it to me!”

The celebrated Australian playwright behind sell-out smash hit *RBG: Of Many, One* and international phenomenon *Prima Facie*, Suzie Miller turns her extraordinary talents to the formation of the AFLW in this world premiere.

In 2010, an official report into the state of Australian Rules Football recommended the creation of a national women’s league. Seven years and a whole lot of grit, passion and fancy footwork later, the AFLW was born. This is the untold story of how the league went from a pipe dream to a sensation the sports world could no longer ignore.

With her gift for docudrama and trademark insight and warmth, Miller reunites with the Aussie theatre-makers behind the original *Prima Facie*: director Lee Lewis and star Sheridan Harbridge. Now fielding a brilliant lineup of eight players including Lucy Bell and Amy Ingram, this dream team writes a love letter to a game and a community.

It’s theatre written in mud, sweat, and belief. It’s not just about a sport. It’s about a revolution.

Venue
Drama Theatre, Sydney Opera House
Approx. duration
2 hrs 20 mins, including interval
Content
Strong language, mature themes

Spotlight Events
Night with the Artists
~ Mon 2 Nov, post-show
Access Performances
Auslan Interpreted
~ Thu 26 Nov 7.30pm
Captioned
~ Tue 1 Dec 6.30pm
~ Sat 5 Dec 1.30pm
Schools Day
~ Wed 18 Nov 11.30am

Co-producers
BRISBANE
FESTIVAL
TWP TRISH
WADLEY
PRODUCTIONS

This project has been assisted by the Australian Government through Creative Australia, its principal arts investment and advisory body.

Associate Partner
KPMG
Celebrating 35 years of partnership with Sydney Theatre Company in 2026

Sheridan Harbridge



6 Nov ~ 20 Dec

THE GOSPEL ACCORDING TO PAUL

THE SECOND COMING

Written and Performed by **Jonathan Biggins**

Directed by **Aarne Neeme**

A soufflé might not rise twice, but this hit comedy will

The sermon on the mount returns to Sydney for a victory lap as Jonathan Biggins – co-creator and star of *The Wharf Revue* and one of Australia’s favourite comic actors – transforms into the visionary, reformer and rabble-rouser, Paul Keating.

Exploring the former PM’s landmark political achievements and personal obsessions, *The Gospel According to Paul* takes the light on the hill and shines it on a man who grew up in the Labor Party at the knee of Jack Lang, approached economics as an artform, and demanded we confront the wrongs of our past. It captures Keating’s eviscerating Question Time wit and wraps it up in a Zegna suit.

With fresh takes on Keating’s recent media moments and zeitgeist zingers, no scumbag is safe in this show, not even our humble narrator.

“A hilariously funny, astute, inspiring show.” (*Limelight*)

Venue

Wharf 1 Theatre

Approx. duration

90 mins, no interval

Content

Strong language

Spotlight Events

Night with the Artists

~ Mon 23 Nov, post-show

Access Performances

Audio Described

~ Sat 5 Dec 1.30pm

Captioned

~ Tue 8 Dec 6.30pm

~ Sat 12 Dec 1.30pm



Designer
Mark Thompson
Lighting Designer
Verity Hampson
Sound & Video Designer
David Bergman

With
Jonathan Biggins



Jonathan Biggins

15 Nov ~ 20 Dec

WHISPERING JACK

THE JOHN FARNHAM MUSICAL

Book by **Jack Yabsley**

Directed by **Mitchell Butel**

Presented by **Sydney Theatre Company**

In association with **Michael Cassel** and **Gaynor Wheatley**

WORLD PREMIERE

This time, he's playing to win.

John Farnham. King of Pop. Australian hero. The voice of a generation. But as a cash-strapped, middle-aged father in the midst of an Australian rock revolution, it could have gone a very different way.

In an outer Melbourne suburban garage in 1986, Farnham, with a new band and manager Glenn Wheatley, began work on an album and a song called *You're the Voice* that would transform his career and their lives. This is the story of an overnight sensation, 20 years in the making.

To celebrate the 40th anniversary of the highest-selling Australian album of all time, *Whispering Jack*, Sydney Theatre Company and Artistic Director Mitchell Butel join forces with Michael Cassel Group (*Hamilton*, *Harry Potter and the Cursed Child*), TalentWorks (*Finding the Voice*) and acclaimed writer Jack Yabsley (*Gold Diggers*) to bring Farnham's life, mischief and musical genius to the stage.

Whispering Jack: The John Farnham Musical is a celebration, not just of hits like *Pressure Down*, *Age of Reason*, *Two Strong Hearts* and *That's Freedom*, but also of friendship, family and a great Australian artist's desire to shine a light on the world around us.

Venue

Roslyn Packer Theatre

Approx. duration

2 hrs 30 mins, including interval

Content

Strong language

Spotlight Events

Night with the Artists

~ Tue 1 Dec, post-show

Access Performances

Audio Described

~ Sat 19 Dec 1.30pm

Auslan Interpreted

~ Sun 13 Dec 1pm

Captioned

~ Tue 15 Dec 6.30pm

~ Sat 19 Dec 1.30pm

In Association with

michael
cassel
group

talentWORKS

Media Partner

smoothfm
95.3

Production Patrons

Jane & Andrew Clifford

The JAAM Foundation

John Farnham



Dine and drink up the view.



Photo: James Green

A new dining precinct

Sydney Theatre Company's reimagined dining precinct is a destination, whether you're dropping in for a pre-show bite or simply soaking up the ambience.

Surrounded by one of the world's most beautiful views, The Wharf Restaurant and Bar is an elegant and relaxed tribute to modern Australian cuisine, just across the water from the glorious Sydney Harbour Bridge.

Or stroll down Hickson Road to Folio – a buzzy new bar opening at Roslyn Packer Theatre in late 2025. Inspired by the classic theatre bars and speakeasies of New York City, Folio will reconceptualise the pre-theatre dash for a drink into a key part of your experience. Folio will be led by bar partner Charlie Ainsbury and serve signature cocktails alongside a full drinks menu and snacks.

Find out what's on offer:
sydneytheatre.com.au/dining

Getting here

It's easier than ever to get to a Sydney Theatre Company show. Set right in the heart of Sydney's newest arts district – The Walsh Bay Arts Precinct – the Wharf is within minutes of all major transport options.

Make your way

- F** Ferry ~ 15 minutes from Circular Quay
- B** Bus ~ 1 minute from the 324/325 stop
- M** Metro ~ 8 minutes from Barangaroo Station
- T** Train ~ 15 minutes from Circular Quay
- P** Car ~ 3 parking stations within 5 minutes

For everything you need to know head to:
sydneytheatre.com.au/yourvisit

A year of brilliant theatre. Sorted.

Make the most of 2026 with a Season Ticket

In 2026, Australia's greatest actors are taking to the Sydney Theatre Company stage, performing stunning works by the most talented theatre-makers in the business. Experience it all, live and up close, with a Season Ticket. Go for three or more productions and join a community of theatre lovers, plus unlock extra perks.

5 Reasons to get your Season Ticket

- 1 Get early access to the best seats
- 2 Save up to 20%* on tickets
- 3 Enjoy unlimited free exchanges
- 4 Secure premium seats for Legends**
- 5 Unlock extra perks, including seniors discounts and concessions in Premium Reserve.

Find out more at
sydneytheatre.com.au/2026



Raj Labade and Will McDonald in *The Talented Mr. Ripley*. Photo: Prudence Upton

Season Ticket Packages

PLATINUM

Save 20%* when you book 10 ~ 13 plays

Priority renewal opens: Wed 17 Sep
On sale to everyone: Wed 1 Oct

GOLD

Save 15%* when you book 6 ~ 9 plays

Priority renewal opens: Mon 22 Sep
On sale to everyone: Fri 10 Oct

SILVER

Save 10%* when you book 3 ~ 5 plays

Priority renewal opens: Wed 29 Oct
On sale to everyone: Thu 6 Nov



Nancy Hayes and Shiv Palekar in *4000 Miles*. Photo: Daniel Boud

Discover more behind the scenes.



Photo: Jay Patel

When it comes to theatre making, what you see on stage is just the tip of the creative iceberg. Sydney Theatre Company's Spotlight program shines a light on the huge amount of creative work that takes place behind the scenes and unpacks the deeper ideas that inspire our artists. Take a peek at what makes us tick, expand your understanding of the artform and enrich your experience beyond lights up.

Nights with the Artists

At select performances, these casual, post-show panel discussions give you an opportunity to hear directly from actors and creatives about their process. Nights with the Artists add no extra cost to your ticket, just stay in your seat once the applause finishes and get ready to learn more.

Workshops

Sydney Theatre Company is at the heart of a vast community of Australian artists and makers and we're bringing this community and the wider public together with our "How to" Workshops. Learn everything from "How to design a set" to "How to write a romcom" from any one of our incredible facilitators (previously including Benjamin Law and Marieke Hardy), for less than the cost of a theatre ticket. Workshops from \$75 to \$90, with a discount for Season Ticket Holders.

Talks Series

In 2026, Sydney Theatre Company is launching a brand-new series of public talks that will connect you with the big ideas behind our productions, gathering voices from academia, politics and the creative industries. More details to be released soon, watch this space.

Learn more about the Spotlight program at: sydneytheatre.com.au/spotlight

Fostering a lifelong love of theatre.



Photo: Joanna Shuen

Sydney Theatre Company Education provides high school students and teachers with the chance to connect with industry experts, the Company and our history.

Schools Days

Throughout the year many school students experience the thrill of theatre for the first time.

Schools Days are an opportunity for students to attend productions in Sydney Theatre Company's season through heavily subsidised tickets and specially scheduled performances. These performances include a post-show Q & A with the production's cast and are supplemented by digital teacher resources, to help deepen student's understanding of the production.

Student Learning Programs

We also host a series of tailored experiences for students including; HSC Staged Readings, Group Workshops delivered by Sydney Theatre Company Teaching Artists, Backstage Tours and the opportunity for students to book special Archival Viewings of past productions. On top of these, we give twenty-five Drama students in Years 10 and 11 from across NSW a chance to take part in our world class Work Experience Week.

Learn more about our education offerings at: sydneytheatre.com.au/education

Pathways to the stage.



Karolina Risteviski (2025 Patrick White Playwrights Award Winner), Sheridan Harbridge (2025 Patrick White Playwrights Fellow). Photo: Ken Leantore.

Sydney Theatre Company Watershed is the Company's home for new work and artistic development, continuing our proud history of nurturing artists for the Australian stage. Along with seasonal new work development and play readings, the Watershed team administers our Watershed Writers program, which biennially selects a cohort of four emerging playwrights to mentor, and the Patrick White Playwrights Award & Fellowship. 2025 Patrick White Playwrights Fellow Sheridan Harbridge says of the program, "it's like having a home and a community to go to. It's an extraordinary opportunity to grow a writer's practice".

The Sydney Theatre Company audience community can experience the work of Watershed first-hand at these events:

Patrick White Playwrights Award & Fellowship Ceremony

Attend the award presentation and witness a staged reading of the award-winning play. Details to be announced.

Watershed Moments

This series of curated public play readings will bring audiences into the play development process, articulating and celebrating the path by which exceptional new works become exceptional theatre.

Lead Donor

Jibb Foundation

Learn more about Watershed at: sydneytheatre.com.au/watershed

Make theatre with us.



Andrea Demetriades in *Home*, Jim Darling, 2021. Photo: Prudence Upton

A vital role

Season Ticket Holders are the heart of Sydney Theatre Company. You fill our theatres and make the magic on stage possible.

But producing bold, ambitious theatre takes more than ticket sales alone. By making a one-off donation or joining our community of GEMs, who Give Every Month, you help ensure that audiences can enjoy our productions for years to come.

Every contribution, no matter the size, plays a vital role in bringing theatre to life.

How to donate

Add a tax-deductible donation or become a GEM when booking your 2026 Season Ticket or:

Visit ~ sydneytheatre.com.au/donate

Call ~ 02 9250 1976

Email ~ foundation@sydneytheatre.com.au

You support a bright future for Sydney Theatre Company.

Foundation Directors

Lead Donors
Anita Belgiorno-Nettis AM (Chair), Michele Brooks, Frances Ingham, Justin Miller AM, Tim Minchin AM, Heather Mitchell AM, Gretel Packer AM, Rebel Penfold-Russell, Helen Thomson, Jane Vicars, Karel Wheen, Rosie Williams, Peggy Yeoh

Muses

Gretel Packer AM, Rosie Williams & John Grill AO

Artistic Director's Circle

Lead Donors
Anita Belgiorno-Nettis AM & Luca Belgiorno-Nettis AM, David Paradise AO, Rebel Penfold-Russell, W & A Johnson, Will & Jane Vicars

Supporting Patrons

Robert Cameron AO & Paula Cameron, David & Catherine Fite, The Kerridge Foundation, Mark & Anne Lazberger, Vivienne Lewis, Sam Meers AO

Main Stage

Lead Donors
Gretel Packer AM, Jane & Andrew Clifford, Rebel Penfold-Russell

Artistic Development

Lead Donors
The Donor Syndicate, Jibb Foundation, Kip Williams

Supporting Patrons

Ruth Armytage AM, Michele Brooks & Andrew Michael, Megan Grace & Brighton Grace, The Hansen Family, Malcolm Robertson Foundation

Education & Community

Lead Donors
Sally & Geoffrey White

Supporting Patrons

Rowena Danziger AM

International Touring

Supporting Patrons
Michele Brooks & Andrew Michael, Mark Coulter & Dr Adam Bayes, David & Fee Hancock, Victoria Holthouse, Vivienne Lewis, Andrew Messenger, Justin Miller AM, David Paradise AO, Rebel Penfold-Russell, Ivan & Karel Wheen, Peggy Yeoh, Anonymous

Lights Up

Lead Donors
Libby & John Fairfax

Supporting Patrons

James & Hayley Baillie, Deb & John Balderstone, Anita Belgiorno-Nettis AM & Luca Belgiorno-Nettis AM, Mark Coulter & Dr Adam Bayes, Heather & Malcolm Crompton, Ian Darling AO & Min Darling, Denton Family Foundation, Victoria Holthouse, W & A Johnson, Maple-Brown Family Foundation Ltd, The Neilson Foundation, Mark & Louise Nelson, Gretel Packer AM, Mrs Roslyn Packer AC, David Paradise AO, The Petre Foundation, Rebel Penfold-Russell, The Dick & Pip Smith Foundation, Will & Jane Vicars, Rosie Williams & John Grill AO, Anonymous (2)

Chair's Circle

Ann Johnson (Chair) & Warwick Johnson, Frances Allan & Ian Narev, Jillian Broadbent AC, Mark Burrows AO, Andrew Cameron AM & Cathy Cameron, Robert Cameron AO & Paula Cameron, Bella & Tim Church, Anne & David Craig, Ian Darling AO & Min Darling, Heather Doig & Rob Koczkar, David Gonski AC & Orli Wargon OAM, Chris & Gina Grubb, Sandra Levy AO, Tony Llewellyn-Jones, Gretel Packer AM, Paul Robertson AO & Lenore Robertson AM, Anne & John Rumpfer, Greg Schneider & Gabbi Phillips, Antony Spanbrook & Chris Yeo, David & Sarah Jane Vaux

\$10,000 - \$19,999

Colin & Richard Adams, The Baker & Bevan Bequest, Berg Family Foundation, Phil & Beverley Birnbaum, Mitchell Butel, Andrew Cameron AM & Cathy Cameron, John Cary, Nic Christodoulou, Anne & David Craig, Doherty Swinhoe Family Foundation, Donus Australia Foundation Ltd, Catherine Dovey & Kim Williams AM, Natassia Halabi & Tolga Kumova, I Kallinikos, Clare Loewenthal, Robyn Martin-Weber, Peter Mason AM & Kate Mason, Tim Minchin AM & Sarah Minchin, Kate Mulvany OAM & Hamish Michael, Jonquil Ritter, Louise Taggart & Peter Homel, Ivan & Karel Wheen, Yim Family Foundation, Anonymous (2)

\$5,000 - \$9,999

Wayne Adams in memory of Elizabeth O'Neill OAM, Sophie & Stephen Allen, Christopher Blaxland, Sandra Bourke, Helen Bowden, Dr Sharron Brown, Dr Andrew Buchanan, Nerida Caesar, Wayne Cahill, Joseph Catanzariti AM, Dr Michelle Deaker, Anne Dunn & Pat Buick, Freilich Prescribed Private Fund, Lee French, Anne Galbraith, Jinnie & Ross Gavin, Wendy Gavin, Michelle Guthrie, Meredith Hellicar, Sally Herman, Dell Kingsford Smith, Zach Kitschke, Sheridan Lee, Virginia Leitch, John Lewis, Susie Moore, John & Maureen Murray, Natasha Nankivell, Janine Perrett, Tony & Kaye Purnell, Dr Judy Ranka, Anne Schofield AM, The Max Sherrard Family, Susan & Ian Thomas, Annie & Graham Williams, Claire Wivell Plater & James Kirby, Prof John Yiannikas, Anonymous (4)

Donations of \$100 and above are recognised on our website.

\$2,000 - \$4,999

Victor Baskir, Noel Bignell, Christine Bishop, Hon J C Campbell KC & Mrs Campbell, Trevor & Cathy Carroll, Louise Christie, Sandra Forbes, Ginny & Leslie Green, Marguerite Gregan & Billy Bennett, Priscilla Guest, Sophie Guest, Lisa Hamilton & Rob White, Louise Hamshere, Cheryl Hatch, Michael Issenberg, Mountain Air Foundation, Sue O'Keefe in memory of Lynda Shearer, Raffi Qasabian & John Wynter, Dr Andrew Rosenberg, Mark & Briony Scott, John & Christina Stitt, Georgie Strömland, R. Thakur, Christine Thomson, Victoria Waldock, Boh Yeng & Peter Hunt, Anonymous (13)

\$1,000 - \$1,999

Jon Anderson & Lance Johnson, Margaret Andrews, Pam Anson, Lillian & Peter Armitage, Christopher Attard & Jason Byrne, Philip Berner, Tony Bosman, Anne Bruning, Mrs Geraldine Bull, Annabelle & Stephen Burley, Alison Carmine, JT Clark, Angela Compton, Megan Cribb, David & LT, Ronald De La Cuadra, Eve Draper, Diane & John Dunlop, Dana Dupere, Graham Egan, Hon Ben Franklin MLC, Judy Friend, Frances Garrick, Liz Gibson, Geoffrey Graham, Margaret R Hawkins, Andreas & Danielle Heidbrink, Julia Jane Pty Limited, Carol Ladd, Lesro Pty Ltd, Cheryl Lo, Richard Lyle, The McBriarty Family, Ruth McColl, Gai McGrath, Dr Stephen McNamara, Fiona Merritt, Peter Munro, Sandra Ollington & Donald Hector, Christina Pender, Julia Pucci, Anne Rein & Rod Gilmour, Professor David Rolph, Stuart Schaefer, Emine Sermet, Josie & Graeme Thompson, Dr David Throsby AO & Dr Robin Hughes, Melissa Tonkin & George Kokkinos, Suzanne & Ross Tzannes AM, Kay Vernon, Sheyne Walsh, Anthony Whealy, Antony Whitlam KC, James & Clytie Williams, Tony Williams, Richard Willis & Janet Abernethy, Julia Wokes, Anonymous (13)

FirstAct

Dr Ashna Basu & Mr Edward Bartolo, Daniel & Paul Barraclough, Jason Bowran & Faris Cosic, Chris Contos, Fokschaner Family, Anna-Marie Gruber, Kathleen Heath & Harrison Grace, Kirsty Hinner, Alexandra Humphrey Cifuentes, Katherine Magnus, Eamonn Mayo, Edward McMahon, Joel Watkins, Anonymous

\$500 - \$999

Siobhan Abdurahman, Diane Anderson, Jeremy Arnott, Susan Bennett, Kevin Boreham & Edwin Ho, Neil Burns, Ms Helen Colman AM, Maura Cordial & Evan Wong, James Cox, Sally Crawford, Nick & Carol Dettmann, Carol Edwards, Charlie Thomas Elliott, Bobbie & David Fairlie, Peter Fogarty, Julie Goold, Dr Anna Gray, WM & EL Gray, Lois Green, Alex Greenwick, Julie Hannaford, Hon Don Harwin, Jill Hawker, Elaine Hiley, Ros Johnson, N Joye, Noel Keen, Richard & Ann Lancaster, Ralph W. Lane OAM, Dr Rosalind Lehane, Gillian Long, Richard Longes, Anne Loveridge, Carol Lowe, Lyon Family, Edwina Maxwell-Parsons, In Memory of Helen McFadyen, Judith McKernan, Sandra McPhee, Troy Meller, Herbert Menka, Marion Nicholas, Sandy Nightingale, Margaret Norington, Patricia Novikoff, Ruth Olip, Geoffrey Osborne, Janette Parkinson, Catherine Parr, Michael & Anna Petersons, Dr Marija Radojevic, Diané Ranck, Karen & Bill Robertson, Robin Rodgers, Trudie Rogers, Dr Diana Semmonds AM, Michael Steel, Barbara Steller, Tom Tansey & Brandon Jones, Diane Tennie, Elizabeth Thompson, Alma Toohey, Vera Vargassoff, Julie Whitfield, Anonymous (32)

Life Patrons

Frances Allan & Ian Narev, Mr Giorgio Armani, Anita Belgiorno-Nettis AM & Luca Belgiorno-Nettis AM, The Caledonia Foundation, Crown Resorts Foundation, Ian Darling AO & Min Darling, Catherine Dovey & Kim Williams AM, Libby & John Fairfax, Vincent Fairfax Family Foundation, David Fite, Stephen Fitzgerald AO & Julie Fitzgerald, Girsensohn Foundation, David Gonski AC & Orli Wargon OAM, John & Frances Ingham Foundation, W & A Johnson, Mark & Anne Lazberger, Danita R. Lowes, Minderoo Foundation, Simon Mordant AO & Catriona Mordant AM, The Neilson Foundation, Cameron & Ilse O'Reilly, Origin Foundation, Packer Family Foundation, Gretel Packer AM, Mrs Roslyn Packer AC, The Paradise Family Foundation, The Petre Foundation, Anne Schofield AM, Shi's Family Foundation, Mr Andrew Stuart, Upton Blanchett Family, Carla Zampatti AC, Anonymous

SoulMates

Colin & Richard Adams, Andrew Benson, Mitchell Bourke, Rob Brookman AM, The Late Stephen Center, Belinda Clark, Sarah Cruickshank, The Late Jayati Dutta, Terry M Fahy, The Late Nancy Fairfax OBE, The Late Denise Robyn Fairservice, The Late Ronald Falk, The Late Jennifer Fulton, Ros Gestier, Girsensohn Foundation, The Late Diane Patricia Hague, Louise Hamshere, Dorothy Hoddinott AO, The Late Isabelle Joseph, Iphygenia Kallinikos, The Late Denis Stanley Klein, Wolf Krueger, Peter Louw, The McBriarty Family, DiAnne McDonald, Justin Miller AM, Christopher John Nicolosi, Mr Mark Neilsen & Mr Tim Trollip, Jonquil & John Ritter, Trudie Anne Rogers, Emine Sermet, Lynette Shelley, Tom Tansey, William Turbet, The Late Shirley Warland, Boh Yeng & Peter Hunt, Anonymous (16)

OUR PARTNERS

We celebrate the support of our valued partners

From its inception, Sydney Theatre Company has forged successful partnerships with the corporate sector. Working alongside Executive Director and Co-CEO Anne Dunn, I've had the joy of meeting many of our sponsors and learning more about their generous support of the Company, including valued partners like law firm Allens and KPMG (a supporter since 1991!). Our partners Adina, Kawai and Playbill have a direct connection with our artists and theatre-making, while Archie Rose, The Fresh Collective and Robert Oatley Wines make every night at the theatre a special event. Together our sponsors are contributing to the cultural legacy of our company, and their support helps to make every performance possible.



Mitchell

Mitchell
Artistic Director & Co-CEO

Presenting Partner



Government Support



Sydney Theatre Company is supported by the NSW Government through Create NSW



Sydney Theatre Company is assisted by the Australian Government through Creative Australia, its principal arts investment and advisory body.

Associate Partners



Celebrating 35 years of partnership with Sydney Theatre Company in 2026

Season Partners



Corporate Supporters

City of Sydney

Tourism & Transport Forum

For further information on sponsorship opportunities please contact **Miranda Purnell**, mpurnell@sydneytheatre.com.au

Sydney Theatre Company

sydneytheatre.com.au

Gadigal Land
Wharf 4/5, 15 Hickson Road
Walsh Bay NSW 2000
Telephone ~ (02) 9250 1777
Toll-Free ~ 1800 467 993 (non-Metro NSW)

2026 Season Photography: Holly Ward
Sam Worthington Portrait: Nick Hudson
John Farnham Portrait: Serge Thomann

Design and Creative Direction moffittmoffitt.com

